

# CIMCO Filter

## Smoothing the path

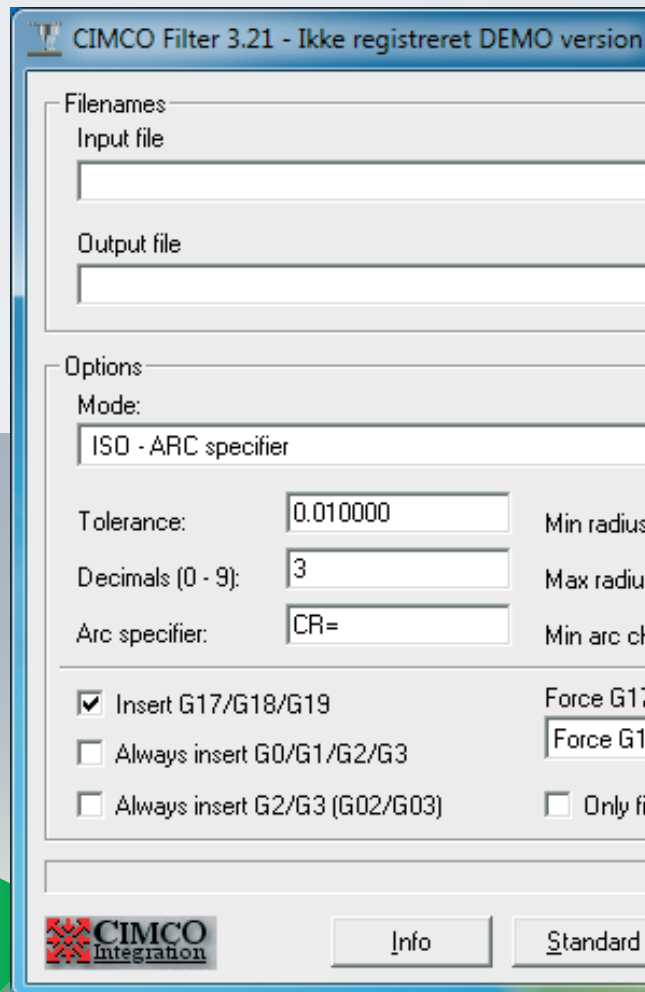
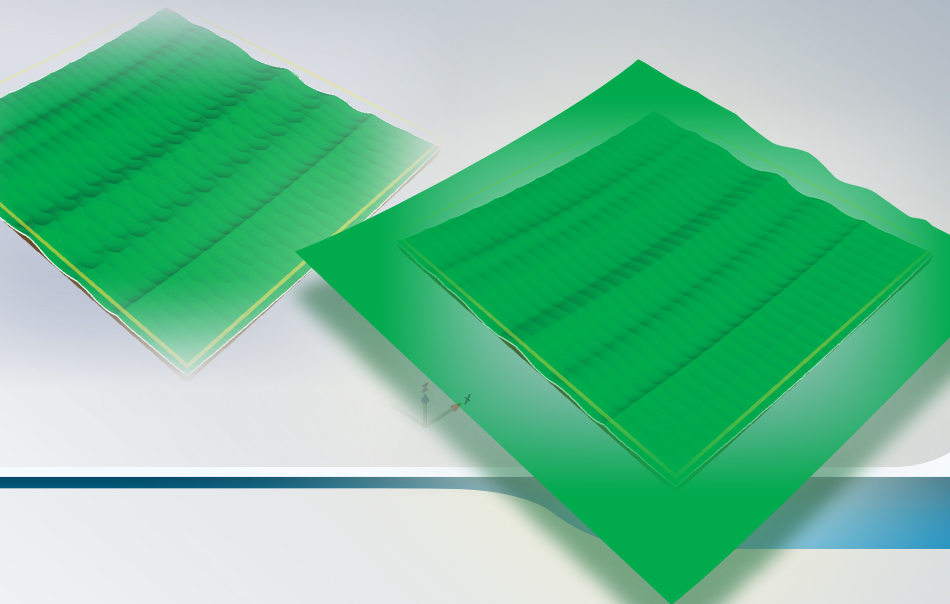
### One way filtering

Most filtering software will simply follow the tools path. This can cause problems in zig-zag toolpaths, as the filtering causes the tool to be close to the lower tolerance limit in one direction, and close to the upper tolerance in the other direction. As can be seen in the picture to the left, this causes large scallops, and a poor surface finish.

CIMCO Filter eliminates this problem by detecting the zig-zag nature of the toolpath and performing the filtering calculation in the same direction on all passes. As can be seen in the picture to the right, this gives a much smoother surface. Or you can get the same surface quality as with most other filtering software, with nearly half as many passes.

### Powercut simulation

CIMCO Filter is a stand alone program or part of the powercut simulation and verification software environment. The illustrations below were generated by Powercut.



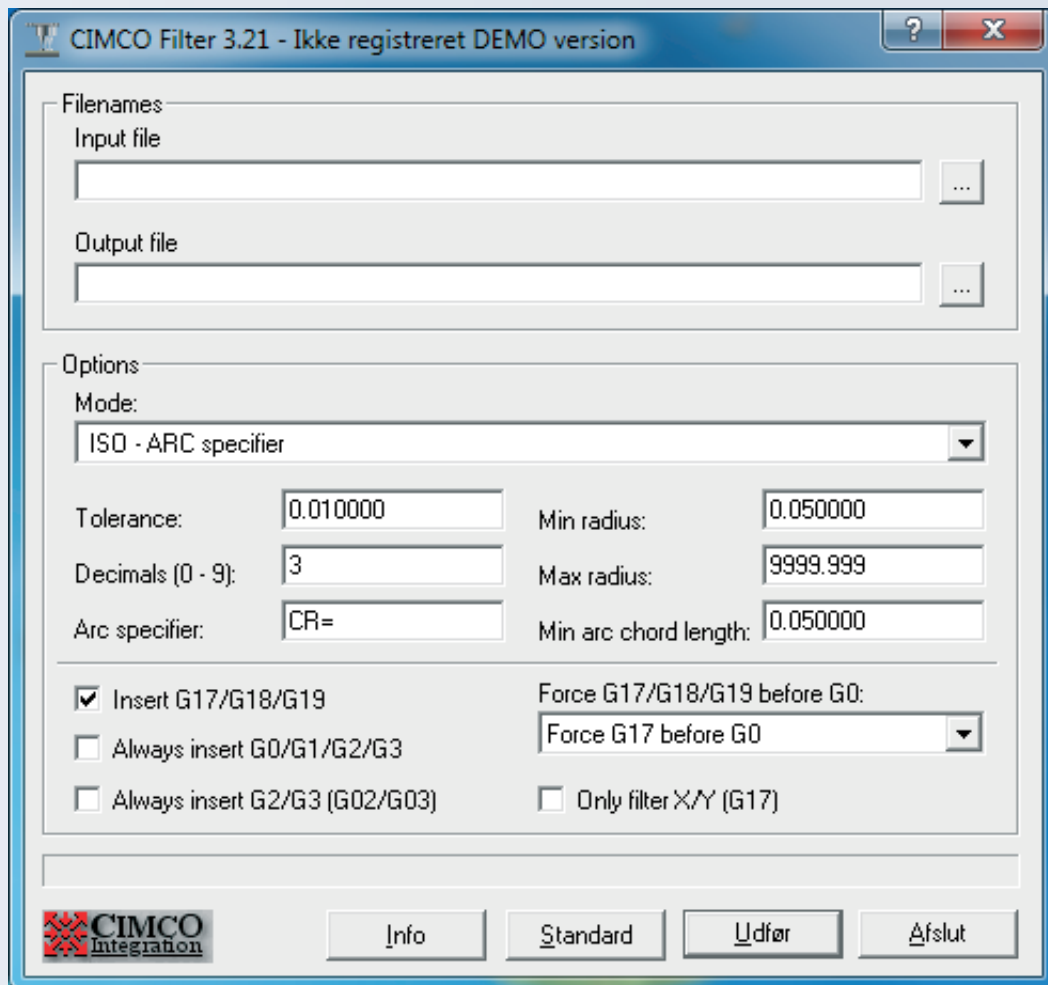
CIMCO Filter 

- ➔ Reduced machining time
- ➔ Reduced wear on tools
- ➔ Reduced program size
- ➔ Reduced transmission time



For more information visit us at  
[www.cimco.com](http://www.cimco.com)





## Replacement of linear moves

CIMCO Filter replaces the linear movements (G1 in ISO code) output from the CAM system with arc moves (G2/G3 in ISO code).

## Machining strategy

The machining strategy applied will affect the possible reduction; If there are no moves restricted to one of the three main planes (G17, G18 and G19), no reduction will occur. One example of a program, that cannot be reduced, is a parallel toolpath, at a 30o angle to the X-axis.

## Match CNC control and accuracy

It is possible to set tolerance, arc type, number of decimals and minimum and maximum arc radii to match the CNC control and the desired accuracy.

## Efficiency

CIMCO Filter improves the efficiency of your old controls, and allows you to fully utilize the 3D arcs and NURBS options on newer controls.

## NC-programs in ISO and Heidenhain

CIMCO Filter reads NC-programs in ISO and Heidenhain format. Lines are converted into lines and arcs in the XY, XZ and YZ planes (G17, G18 and G19 in ISO code).

## Stand alone program or Powercut.

CIMCO Filter is used as a stand-alone program, however, it can be purchased as part of the Powercut software, which gives you rapid and accurate NC program simulation and verification based on solid technology.

## Reseller

### Europa

CIMCO A/S  
Copenhagen  
Denmark

Tel: +45 45 85 60 50  
Fax: +45 45 85 60 53

Web: [www.cimco.com](http://www.cimco.com)  
E-mail: [info@cimco.com](mailto:info@cimco.com)

### CIMCO Americas

CIMCO Americas, LLC  
651 S Sutton Road, Suite 276  
Streamwood, IL 60107

Tel: +1 704 644 3587  
Fax: +1 704 954 0514

